

## Sound import

Am Weingarten 35

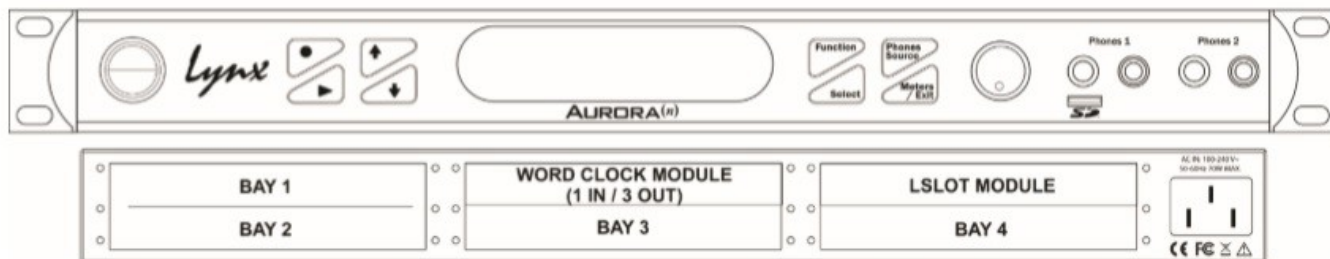
90518 Altdorf

Mob.: +48 502 671 456; +49 918 790 4377

info@soundimport.pl , [www.lynxstudio.eu](http://www.lynxstudio.eu), [www.soundimport.pl](http://www.soundimport.pl)

### Lynx Studio Technology

name	description	Price in Euro included 19% Mst
<b>Aurora(n) CHASSIS</b>	which is the base model with no modules, no converters, no inputs, etc., then add options	<b>1.349 €</b>
<b>LM-AIO8</b>	<ul style="list-style-type: none"> <li>•8 channels of Aurora(n) line in and out</li> <li>•Hilo Converter Technology (HCT) design and technology borrowed from the Hilo providing Hilo-like quality</li> <li>•Discrete Converter Array with each channel having a self contained shielded circuit for increased dynamic range, lower noise and less crosstalk</li> <li>•Add additional line I/O to an existing 8ch, 16ch or 24ch Aurora(n)</li> <li>•Use for line I/O on Custom Shop Aurora(n) configurations in 8-channel increments</li> </ul>	<b>999 €</b>
<b>LM-DIG</b>	<ul style="list-style-type: none"> <li>•16 channels in and 16 channels out of 24-bit AES/EBU, with bit-perfect transmission at sample rates of up to 192kHz</li> <li>•Integrates seamlessly with the mixing and routing engine on the Aurora(n)</li> <li>•Allows the Aurora(n) to replace any current Aurora system that requires AES/EBU connectivity</li> </ul>	<b>359 €</b>
<b>LM-PRE4</b>	<ul style="list-style-type: none"> <li>•Four-channel microphone/line/HI-Z input module for Aurora(n)</li> <li>•On-board four channel Aurora(n) A/D conversion directly coupled to preamp out</li> <li>•Transformerless, transparent design</li> <li>•Up to 68.6dB gain in 1dB increments</li> <li>•Low noise (-129dBu EIN) microphone input</li> <li>•Independent 48V phantom power, phase, high-pass filter, and pad for each channel</li> <li>•Dedicated line level signal path provides performance identical to LM-AIO8</li> </ul>	<b>629 €</b>
<b>LT-USB</b>	<p>Up to 16 channels of I/O @ 96 kHz Up to 8 channels of I/O @ 192 kHz</p>	<b>350 €</b>
<b>LT-HD</b>	<p>One Primary and one Expansion DigiLink port Up to 32 channels per HD Core or Accel Core card Supports full channel count up to 192 kHz</p>	<b>350 €</b>
<b>LT-TB</b>	<p>Two Thunderbolt™ ports Up to 32 channels Supports full channel count up to 192 kHz Can daisy-chain up to Six LT-TB equipped Aurora and Hilo converters</p>	<b>583 €</b>
<b>LT-DANTE</b>	<p>One Primary and one Secondary port Extremely low latency Supports Dante audio networking standard</p>	<b>620 €</b>



## Konfigurator Aurory (n)

### H I L O

<b>Hilo (USB)</b> <b>Silver or Black</b>	Reference A/D D/A Converter System Two-channel 24-bit / 192 kHz Analog I/O Two-channel 24-bit / 192 kHz Digital I/O Headphone Amplifier, Flexible monitor controller LT- USB	<b>2.395 €</b>
<b>Hilo (TB)</b> <b>Silver or Black</b>	Reference A/D D/A Converter System Two-channel 24-bit / 192 kHz Analog I/O Two-channel 24-bit / 192 kHz Digital I/O Headphone Amplifier Flexible monitor controller LT- TB	<b>2.690 €</b>
<b>Hilo (Dante)</b> <b>Silver or Black</b>	Reference A/D D/A Converter System Two-channel 24-bit / 192 kHz Analog I/O Two-channel 24-bit / 192 kHz Digital I/O Headphone Amplifier, Flexible monitor controller LT- DANTE	<b>2.775 €</b>
<b>Hilo Rack</b>	rack 19' 2 H do zamocowania dówch HILO	<b>130 €</b>

### Karty dźwiękowe

<b>E22</b>	Reference sound card Two-channel 24-bit / 192 kHz Analog I/O Two-channel 24-bit / 192 kHz Digital I/O	<b>749 €</b>
<b>E44</b>	Reference sound card 4-channel 24-bit / 192 kHz Analog I/O 4-channel 24-bit / 192 kHz Digital I/O	<b>999 €</b>
<b>AES16e</b>	192 kHz Multichannel AES/EBU Interface Thirty-two-channel 24-bit / 192 kHz Digital I / O	<b>775 €</b>
<b>AES16e-SRC</b>	192 kHz Multichannel AES/EBU Interface Thirty-two-channel 24-bit / 192 kHz Digital I/O	<b>895 €</b>
<b>AES16e-50</b>	192 kHz Multichannel AES/EBU Interface Thirty-two-channel 24-bit / 192 kHz Digital I/O AES50 Port Available	<b>995 €</b>

### Akcesoria i kable

<b>L2/Aur Kit</b>	Allows LynxTWO and Lynx L22 PCI users to add up to 16 analog or digital I/O channels. Includes a six-foot cable to connect the LynxTWO or L22 to the included mounting plate, and internal ribbon cable. Adds up to 16 channels of I/O at 48 kHz, 8 channels of I/O at 88.2/96kHz, 4 channels at 176.4/192 kHz.	<b>66 €</b>
<b>AVP-1</b>	Vented Panel	<b>100 €</b>

<b>LS-AES</b>	8-Channel AES/EBU or S/PDIF Interface Module for LynxTWO and Lynx L22 Audio Interfaces	<b>290 €</b>
<b>CBL-AIN85 aurora cable</b>	Analog input cable. Male 25 pin D-sub connector (white shield) to eight female XLR connectors; 5 meters (16.4 feet) long; TASCAM wiring standard.	<b>85 €</b>
<b>CBL-AOUT85 aurora cable</b>	Analog output cable. Male 25 pin D-sub connector (black shield) to eight male XLR connectors; 5 meters (16.4 feet) long; TASCAM wiring standard.	<b>85 €</b>
<b>CBL-DIGY85 aurora cable</b>	Digital input/output cable; eight channels AES/EBU I/O. Male 25 pin D-sub connector (yellow) with four female XLR connectors for input and four male XLR connectors for output; 5 meters (16.4 feet) long; Yamaha pinout configuration.	<b>95 €</b>
<b>CBL-AES1605 aurora cable</b>	26-pin high-density male D-sub to 25-pin male D-sub. Supports 4 stereo (8 mono) channels of input and output. Connects AES16 or AES16e to Aurora digital I/O. Twelve-foot, 110-ohm shielded twisted pair cabling. <i>Note: One cable needed for Aurora 8; pairs are required for Aurora 16.</i>	<b>70 €</b>
<b>CBL-L22Audio</b>	E22 Audio Cable. 2 XLR-M/2 XLR-F to DB25	<b>50 €</b>
<b>CBL-L22Sync</b>	E22 Sync Cable. 2 XLR to HD15 for Digital and 2 BNC for Word Clock I/O	<b>45 €</b>
<b>CBL-L2AudioA</b>	E44 Audio Cable. 4 XLR-M/4 XLR-F to DB25	<b>65 €</b>
<b>CBL-ESYNC</b>	E44 Sync Cable. 4 XLR to HD15 for Digital and 2 BNC for Word Clock I/O	<b>65 €</b>
<b>CBL-XFDR18</b>	S/PDIF Adapter. XLR Female to RCA Male, 18" Long; Digital Out to S/PDIF	<b>10 €</b>
<b>CBL-AES1604 AES16e cable</b>	26-pin high-density male D-sub to four female XLR (8 mono AES input channels), four male XLR (8 mono AES output channels), and one female BNC (word clock I/O). Six-foot, 110-ohm shielded twisted pair cabling.	<b>70 €</b>
<b>LYN-AES16E50 KIT</b>	External CAT5e/6 bracket for AES16e-50.	<b>110 €</b>